

New Emergency Department entrance opening in 2025



Liverpool Hospital's Emergency Department entrance and drop-off zone will move from Elizabeth Street to Goulburn Street this year as part of the \$830 million Liverpool Health and Academic Precinct (LHAP) redevelopment.

The move completes the first stage of the ED's ongoing transformation and also includes a new waiting room and reception area.

The Elizabeth Street entrance will close permanently.

"This is an exciting step forward in delivering a more accessible and efficient ED for our community. The new entrance and reception area set the foundation for the world-class facility we are building," Liverpool Hospital General Manager Scott McGrath said.

The redevelopment of the ED is a key feature of the LHAP project. Completed progressively across four stages, it will include specialised spaces for children, enhanced diagnostic services, and upgraded facilities. The ED will double in size by 2027 when the LHAP redevelopment is expected to be complete.

"This exciting redevelopment is about meeting the evolving needs of our growing community and ensuring the best care for years to come," Mr McGrath said.

Looking ahead to a year of progress

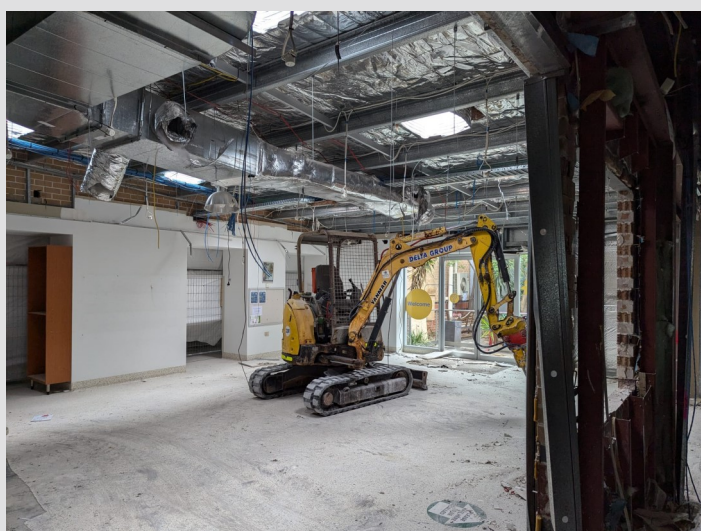
Liverpool Health and Academic Precinct redevelopment of Liverpool Hospital is preparing for a big year of progress on Stage 2 of the \$830 million project.

Hospital General Manager Scott McGrath said he was excited to see the project moving forward this year.

“Stage 2 will deliver a new Integrated Services Building with two towers, including state-of-the-art inpatient units, expanded women’s and children’s services, and an integrated cancer centre, including the Australian Cancer Research Foundation Oasis Centre,” he said.

“It is fantastic to see the preparations for the second stage of this incredible redevelopment.”

Emergency Department enhancements including a new entrance and drop-off zone on Goulburn Street, as well as a new waiting area, will open in the coming months as part of the ongoing ED expansion.



Strip out of the old oncology day centre



Healing Through Art: Stage 2 Paediatrics Artwork

One of the community artists involved in the creation of the stunning wall art in the hospital’s new Integrated Services Building is designing some beautiful images for the new children’s department as part of the LHAP Stage 2.

Created by artist Kevser Urgulu, the designs continue the themes of nature and journey introduced in the Stage 1 wall art but with elements designed to captivate and inspire children and their families.

Acting Nurse & Midwifery Manager – Women’s Health, Neonatology and Paediatrics, Jemma Linkenbach, was excited about the children’s ward designs.

“The Stage 2 Paediatrics Artwork will be a beautiful addition to our hospital. Journeys in Harmony II offers a vibrant, whimsical design that engages our young patients, helping to create a calm and comforting atmosphere in our unit,” Jemma said.

“It’s more than just art on the walls. The art is a meaningful and therapeutic tool that supports the healing journey for our youngest patients.

“We’re so proud to be able to offer a space where art and healing come together, making our hospital a welcoming and culturally safe environment for everyone of all ages,” Jemma said.

Scan the QR Code or click the link to view our latest video showcasing the arts in Stage 1 including hearing from Kevser who will feature in Stage 2.

